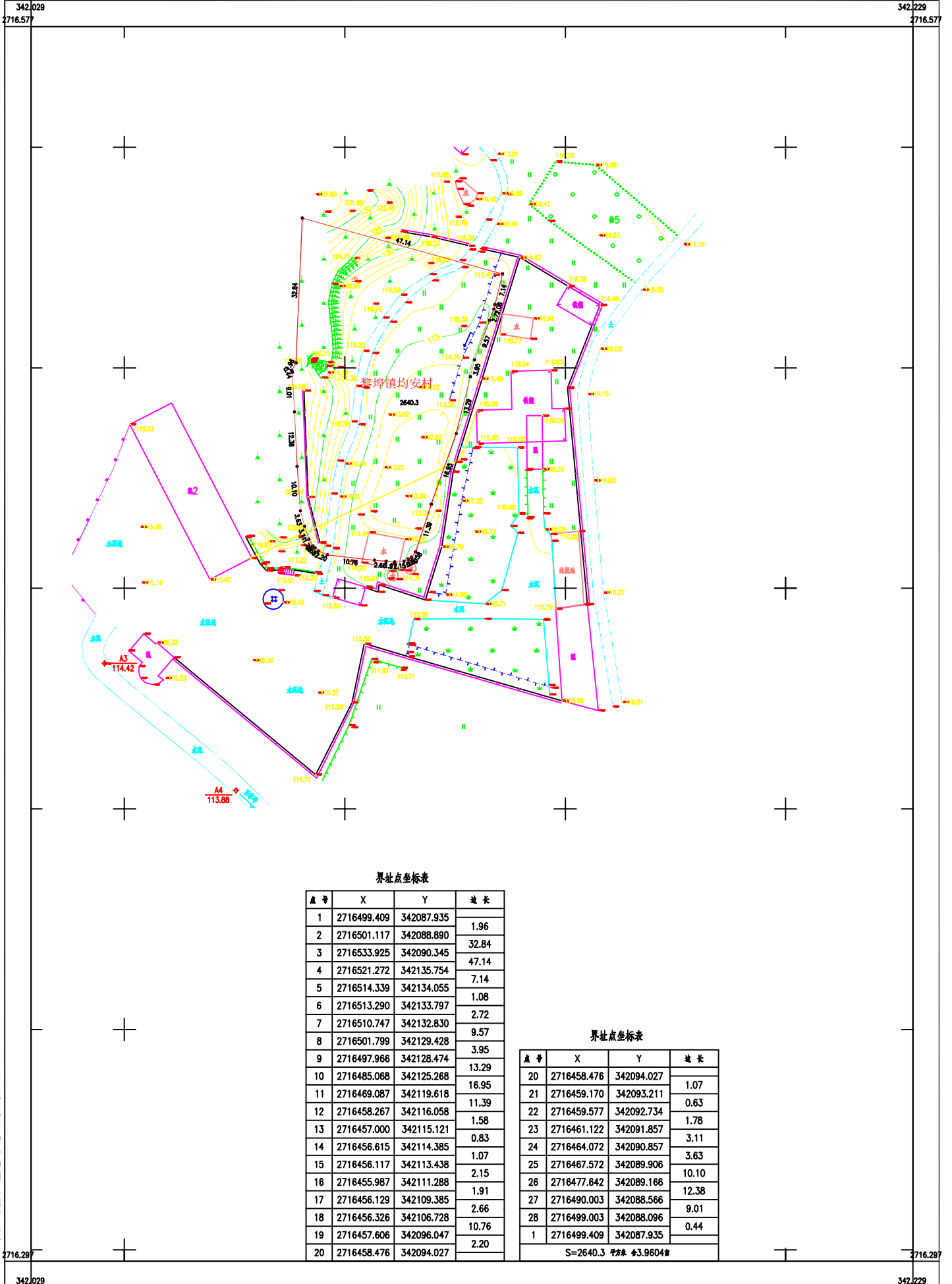


阳山县2020年度第二批城镇建设用
2716.30-342.03



界址点坐标表

| 点号 | X | Y | 边长 |
|----|-------------|------------|-------|
| 1 | 2716499.409 | 342087.935 | 1.96 |
| 2 | 2716501.117 | 342088.890 | 32.84 |
| 3 | 2716533.925 | 342090.345 | 47.14 |
| 4 | 2716521.272 | 342135.754 | 7.14 |
| 5 | 2716514.339 | 342134.055 | 1.08 |
| 6 | 2716513.290 | 342133.797 | 2.72 |
| 7 | 2716510.747 | 342132.830 | 9.57 |
| 8 | 2716501.799 | 342129.428 | 3.95 |
| 9 | 2716497.966 | 342128.474 | 13.29 |
| 10 | 2716485.068 | 342125.268 | 16.95 |
| 11 | 2716469.087 | 342119.618 | 11.39 |
| 12 | 2716458.267 | 342116.058 | 1.58 |
| 13 | 2716457.000 | 342115.121 | 0.83 |
| 14 | 2716456.615 | 342114.385 | 1.07 |
| 15 | 2716456.117 | 342113.438 | 2.15 |
| 16 | 2716455.987 | 342111.288 | 1.91 |
| 17 | 2716456.129 | 342109.385 | 2.66 |
| 18 | 2716456.326 | 342106.728 | 10.76 |
| 19 | 2716457.606 | 342096.047 | 2.20 |
| 20 | 2716458.476 | 342094.027 | |

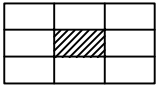
界址点坐标表

| 点号 | X | Y | 边长 |
|----|-------------|------------|-------|
| 20 | 2716458.476 | 342094.027 | 1.07 |
| 21 | 2716459.170 | 342093.211 | 0.63 |
| 22 | 2716459.577 | 342092.734 | 1.78 |
| 23 | 2716461.122 | 342091.857 | 3.11 |
| 24 | 2716464.072 | 342090.857 | 3.63 |
| 25 | 2716467.572 | 342089.906 | 10.10 |
| 26 | 2716477.642 | 342089.166 | 12.38 |
| 27 | 2716490.003 | 342088.566 | 9.01 |
| 28 | 2716499.003 | 342088.096 | 0.44 |
| 1 | 2716499.409 | 342087.935 | |

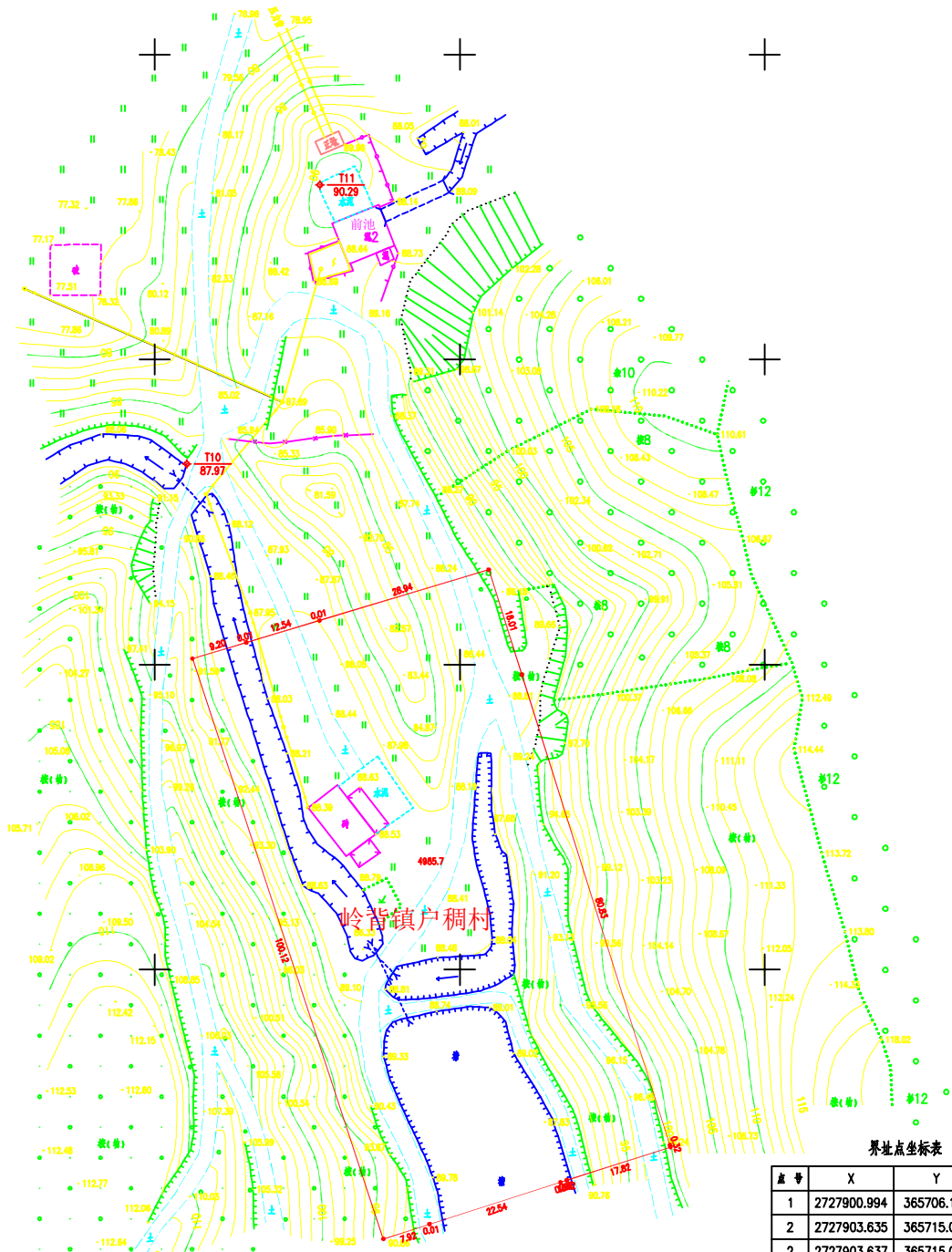
S=2640.3 平方# 3.9604#

清远市华科勘测工程有限公司

阳山县2020年度第二批城镇建设用 2727.74-365.65



365.646 2728.022 365.646 2728.022



界址点坐标表

| 桩号 | X | Y | 边长 |
|----|-------------|------------|--------|
| 1 | 2727900.994 | 365706.190 | 9.20 |
| 2 | 2727903.635 | 365715.002 | 0.01 |
| 2 | 2727903.637 | 365715.009 | 12.54 |
| 3 | 2727907.237 | 365727.024 | 0.01 |
| 3 | 2727907.239 | 365727.032 | 28.94 |
| 4 | 2727915.544 | 365754.752 | 18.01 |
| 9 | 2727898.361 | 365760.157 | 80.83 |
| 10 | 2727821.261 | 365784.434 | 0.32 |
| 5 | 2727820.952 | 365784.527 | 17.82 |
| 11 | 2727815.515 | 365767.553 | 0.02 |
| 11 | 2727815.513 | 365767.534 | 1.07 |
| 6 | 2727815.187 | 365766.518 | 0.01 |
| 6 | 2727815.185 | 365766.511 | 22.54 |
| 7 | 2727808.309 | 365745.042 | 0.01 |
| 7 | 2727808.308 | 365745.036 | 7.92 |
| 8 | 2727805.891 | 365737.492 | 100.12 |
| 1 | 2727900.994 | 365706.190 | |

S=4985.7 方位角 47.4785°

清远市华科勘测工程有限公司

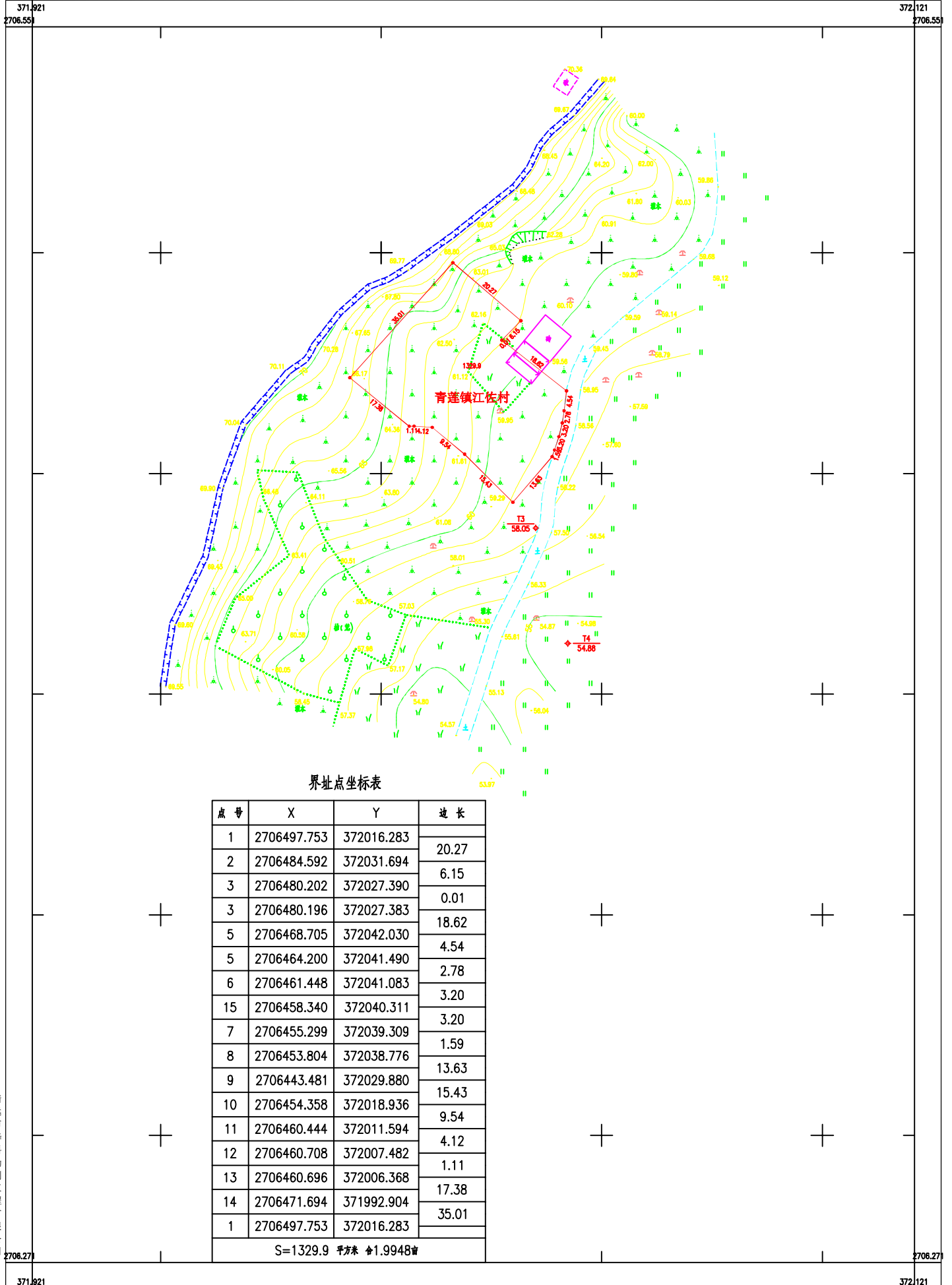
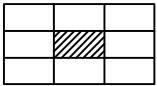
2727.74 365.646 2727.74 365.646

2020年03月数字化成图
2000国家大地坐标系(中央子午线114度)
1985国家高程基准

1:500

测量员:龚桥鉴
绘图员:胡梅花
检查员:曾立汀

阳山县2020年度第二批城镇建设用
2706.27-371.92



界址点坐标表

| 点号 | X | Y | 边长 |
|-----------------------|-------------|------------|-------|
| 1 | 2706497.753 | 372016.283 | 20.27 |
| 2 | 2706484.592 | 372031.694 | 6.15 |
| 3 | 2706480.202 | 372027.390 | 0.01 |
| 3 | 2706480.196 | 372027.383 | 18.62 |
| 5 | 2706468.705 | 372042.030 | 4.54 |
| 5 | 2706464.200 | 372041.490 | 2.78 |
| 6 | 2706461.448 | 372041.083 | 3.20 |
| 15 | 2706458.340 | 372040.311 | 3.20 |
| 7 | 2706455.299 | 372039.309 | 1.59 |
| 8 | 2706453.804 | 372038.776 | 13.63 |
| 9 | 2706443.481 | 372029.880 | 15.43 |
| 10 | 2706454.358 | 372018.936 | 9.54 |
| 11 | 2706460.444 | 372011.594 | 4.12 |
| 12 | 2706460.708 | 372007.482 | 1.11 |
| 13 | 2706460.696 | 372006.368 | 17.38 |
| 14 | 2706471.694 | 371992.904 | 35.01 |
| 1 | 2706497.753 | 372016.283 | |
| S=1329.9 平方米 合1.9948亩 | | | |

清远市华科勘测工程有限公司